



PLUMBING | HEATING | COMMERCIAL



## VOL FIVE | APR 2022





PLUMBING | HEATING | COMMERCIAL

## HomeCover 365 IS HERE TO SUPPORT YOUR NEEDS

Are you sick of dealing with companies that can't provide you with quality plumbing and electrical cover? Or are you worried about shelling out hundreds of pounds for a new boiler when something goes wrong?

Our HomeCover 365 product provides our customers with a complete boiler, heating, plumbing & electrical cover for your home, with a team you can trust.

You can get boiler or electrical cover from our team for as little as 25p a day, which works out as less than a coffee a week from your favourite national chain!

If you're interested in learning more about our HomeCover 365 packages visit us at: [www.homecover365.co.uk](http://www.homecover365.co.uk)



Complete boiler, heating, plumbing & electrical cover  
for your home, with a team you can trust.





PLUMBING | HEATING | COMMERCIAL

## COUNTING DOWN THE DAYS UNTIL TREK 26!

The ADS team are counting down the days until we undertake Trek 26 Lake District in support of Alzheimers Society's fight against Dementia!

Sadly, research shows there are more than 850,000 people in the UK who have dementia. One in 14 people over the age of 65 have dementia, and the condition affects 1 in 6 people over 80.

Over the last year we have taken a number of steps to ensure we are able to empathatically handle work around dementia sufferers, and our team has completed training to become Dementia Friends.

A Dementia Friend is somebody who learns about dementia so they can help their community.





PLUMBING | HEATING | COMMERCIAL

## HOW WE'RE PREPARING FOR THE TREK!

To prepare for the 13-mile trek starting from Patterdale Cricket Club, Penrith, Cumbria our team has been getting more active!

Our HR Manager Julie has been doing 5K park runs each Saturday with her son, and has been cycling outdoors with her husband Dave and friends when the weather permits it!

Dave has increased his regular exercise programme to include an additional cardio vascular hill training sessions.

Vicky and Nigel have been regularly cycling outside of work, and have also been enjoying the end of Winter so they can get out more often in preparation for the big trek!







PLUMBING | HEATING | COMMERCIAL

## TEAM UPDATES!

### Meet ADS Plumber Michael Duerden!

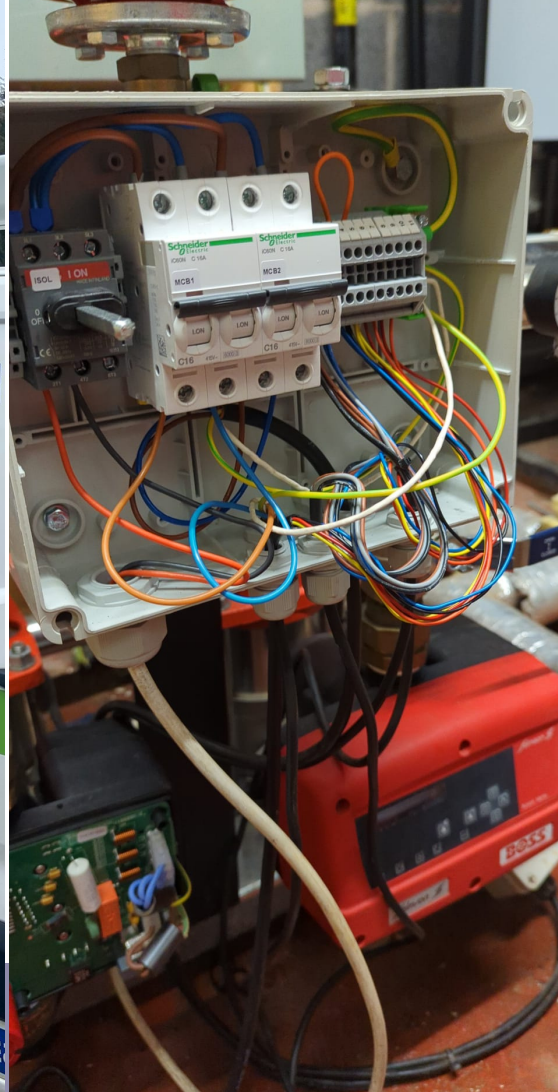
Michael joined our team recently and has been undertaking a multitude of different projects and has enjoyed the variety of work we get here at ADS, instead of working on the same style of jobs day in and day out.

"My day-to-day job roles are usually plumbing-based, but every day differs, so it may be handling a toilet that's blocked, or I might need to fit a new radiator! There is always something to keep your brain working and mind moving."

It's fair to say that it hasn't taken Michael long to fit in!

"The lads are like one big family and if you ever need advice someone's always happy to lend a hand."





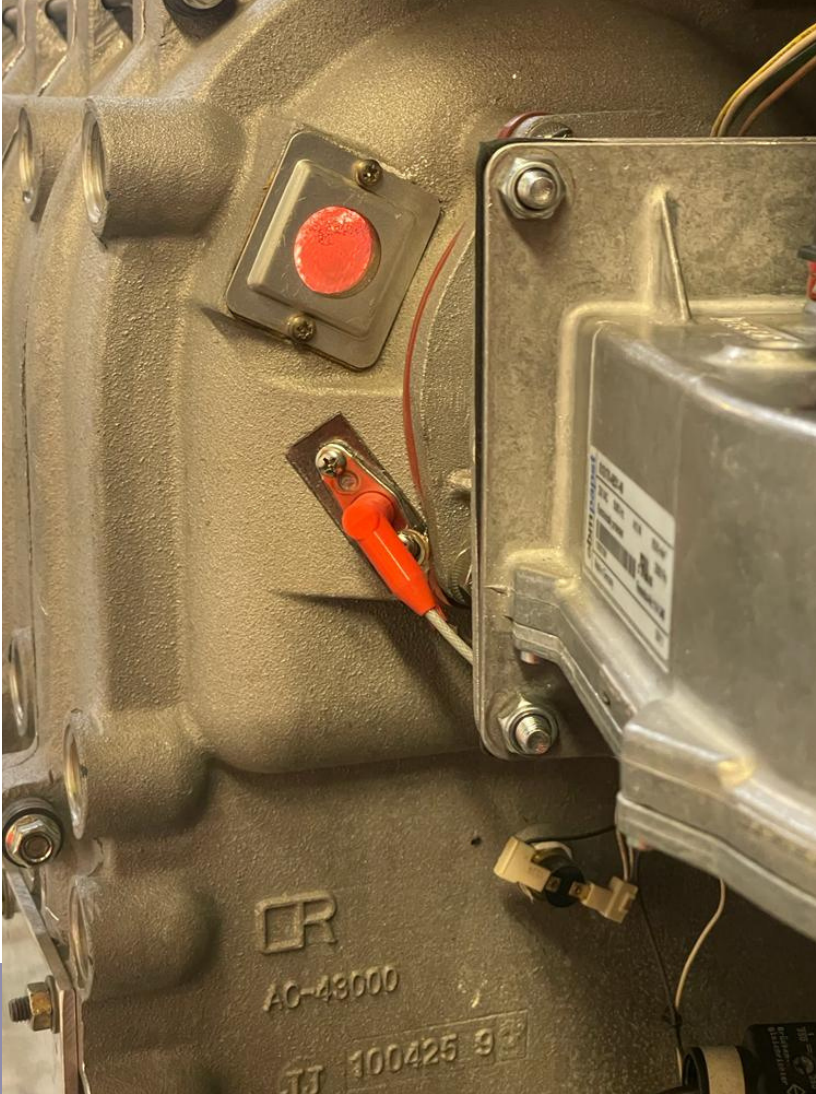
**AS PER USUAL OUR TEAM HAS BEEN VERY BUSY!**

**Our electrical and Plumbing teams are here to support homeowners, landlords, and commercial sites.**

In the last month, we have been called to a large variety of jobs; Michael, seen here on the right, attended a facility to fit a high-quality water filtration system, while one of our engineers visited a care home to change two inverters, which boosts the water supply to various rooms in the building.

Our expert engineers are here to help you and strive to provide you with the most affordable, efficient way to deal with your repairs!





## PROJECT SPOTLIGHT: CINNAMON CARE LEAH LODGE

### Client: Cinnamon Care Leah Lodge

Leah Lodge is a refurbished, boutique care home set on the borders of Blackheath and brings quality residential and dementia care to the local area.

Our team was called to replace two sets of probes and one Broag S100611 fan. It is essential that any care home has the support of a reliable company that is capable of quickly and professionally responding to repairs, to ensure that the care home staff are able to continue focusing on the care of their residents!



## COMMERCIAL

ADS offers bespoke M & E and PPM packages to the commercial sector. We have a high level of expertise, multi-discipline engineers and outstanding customer service.



## RESIDENTIAL

ADS Electrical & Mechanical Limited are a Preston based plumbing, heating and electrical specialist and we have been serving the North - West for many years.



### COMPLETE BOILER, HEATING, PLUMBING & ELECTRICAL COVER FOR YOUR HOME, WITH A TEAM YOU CAN TRUST!

We are offering care home workers the opportunity to LEVEL UP their home cover by upgrading your HomeCover 365 package for the next 12 months FOR FREE!

That means, if you sign up for HomeCover 1, HomeCover 2 or HomeCover 3 you will be levelled up and receive the next package up without incurring any additional costs!

**CONTACT US TODAY!**